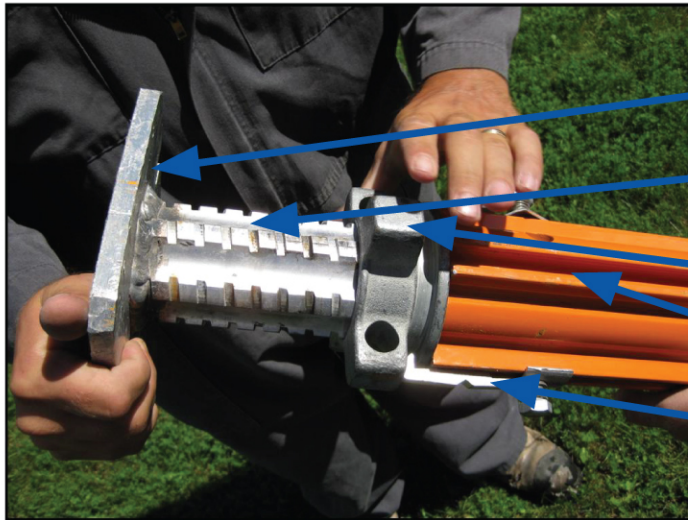




SKYWAY 25 Kip Aluminum Prop

SUPERIOR BENEFITS

- Lightweight aluminum design - increased productivity on the jobsite
- Maintenance free
- Long service life
- Modular design allows worksite flexibility and efficiency
- Can be used as a single prop or as part of a shoring frame system
- Available in four heights up to 8'0" and the prop is available in eight lengths up to 23'6" shoring height



ALUMINUM PROP DETAILS

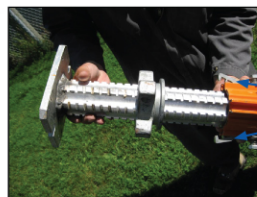
Aluminum screw jack with base plate

Screw jack with speed thread

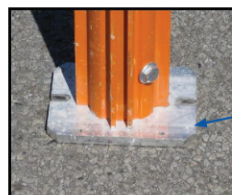
HD screw jack nut with leverage bar hole

T-bolt slot

Spring loaded screw jack retainer clip (2)



For fast adjustment, release retainer clips and pull out screw jack body, then spin nut up or down to desired height



Removable top / bottom plate for prop. Will also accept U-head for shoring applications



SKYWAY

SkyTech 25 Kip Aluminum Prop

Efficient, Versatile, Any Configuration, Economical

#2 SkyTech Aluminum Prop

Skyway Code: 825-70-66

Total Weight = 21.55Kg (47.5 Lbs.)

	Height	Length	Load in Kips / lbs (Factor of Safety 3:1)	Load in KN (Factor of Safety 3:1)
A	Fully Closed	6'-6" (78")	27.50 / 27,500	122.33
B	Mid Height	8'-10" (106")	21.45 / 21,450	95.42
C	Fully Open	11'-0" (132")	15.39 / 15,390	68.46

#3 SkyTech Aluminum Prop

Skyway Code: 825-70-88

Total Weight = 28.58Kg (63 Lbs.)

	Height	Length	Load in Kips / lbs (Factor of Safety 3:1)	Load in KN (Factor of Safety 3:1)
A	Fully Closed	8'-6" (102")	23.00 / 23,000	102.31
B	Mid Height	10'-9" (129")	17.27 / 17,270	76.82
C	Fully Open	13'-0" (156")	11.550 / 11,550	51.38

#4 SkyTech Aluminum Prop

Skyway Code: 825-70-108

Total Weight = 31.30Kg (69 Lbs.)

	Height	Length	Load in Kips / lbs (Factor of Safety 3:1)	Load in KN (Factor of Safety 3:1)
A	Fully Closed	10'-6" (126")	18.76 / 18,760	83.45
B	Mid Height	13'-0" (156")	15.15 / 15,150	67.39
C	Fully Open	16'-0" (192")	10.90 / 10,900	48.49



www.skywaycanada.ca

7001 B – 50th Avenue, Bonnyville, AB,
Canada T9N 2G3
Tel.:780.826.3085 • Fax.:780.826.5095

617 Scott Road, Sarnia, ON,
Canada N7T 8G3
Tel.:519.332.8383 • Fax.:519.332.3224

687 Harold Cres, Thunder Bay, ON,
Canada P7C 5H6
Tel.:807.768.8686 • Fax.:807.768.8687

11565 - 44th Street S.E., Calgary, AB,
Canada T2Z 4A1
Tel.:403.276.6666 • Fax.:403.230.9308

170 Claireville Drive, Toronto, ON,
Canada M9W 5Y3
Tel.:416.744.6000 • Fax.:416.744.6001

Toll Free: 1.866.866.3700

3408 – 76th Avenue, Edmonton, AB,
Canada T6B 2N8
Tel.:780.413.8007 • Fax.:780.413.8012

4504 – 58th Street, Whitecourt, AB,
Canada T7S 0B8
Tel.:780.778.6519 • Fax.:780.778.6521